

MEDICAL RELIEF CAMP

FLOOD-AFFECTED COMMUNITIES

Makan Bagh, Swat-2025

Implemented by
ACD



Funded by: **MERCY CORPS**

In collaboration with: **PTP KP, Shifa Hospital, and Hassan Medical Complex**



TABLE OF CONTENTS

1	Executive Summary
2	Background & Rationale
3	Objectives
4	Methodology
5	Camp Setup & Operations
6	Beneficiaries & Statistics
7	Case Stories
8	Challenges Faced
9	Key Outcomes & Impact
10	Recommendations & Way Forward
11	Acknowledgements



EXECUTIVE SUMMARY

The Association for Community Development (ACD), with support from Mercy Corps and in collaboration with the Provincial TB Control Program, Shifa Hospital, and Hassan Medical Complex, organized a Medical Relief Camp on 25th August 2025 at Makan Bagh, Mingora, Swat.

The camp aimed to address urgent health needs of flood-affected populations by providing:

- Free consultations
- Laboratory investigations
- Imaging facilities
- Counseling and psychosocial support
- Free medicines

Key Results:

- 574 patients served
- 3 new TB cases diagnosed and initiated on treatment
- 7 TB patients under treatment provided ATT refills
- Strengthened collaboration between NGOs, government health institutions, and private hospitals

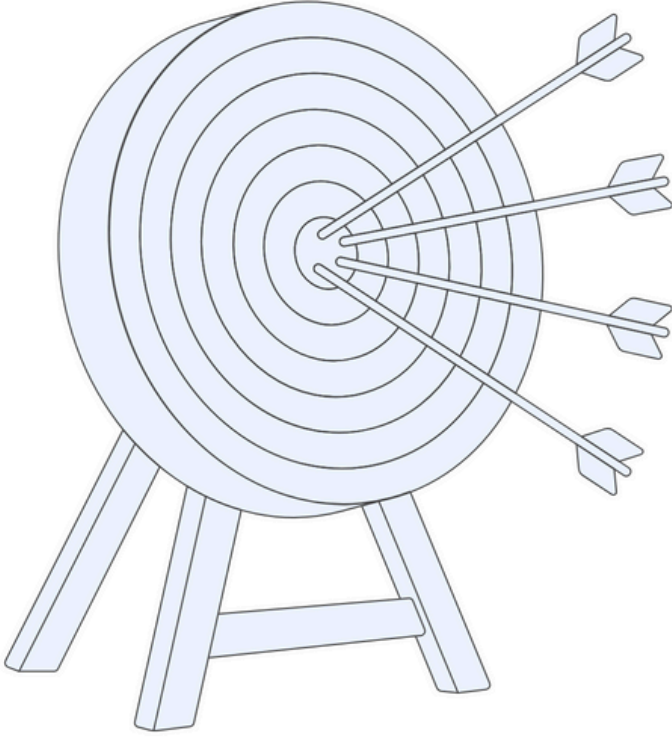
BACKGROUND & RATIONALE

In August 2025, unprecedented floods struck District Swat, causing loss of lives, livestock, and infrastructure. The displaced population faced high risks of communicable diseases such as TB, diarrheal diseases, and respiratory infections, as well as non-communicable conditions like hypertension and diabetes.

Leveraging its TB care expertise, ACD, at the request of district authorities, swiftly transformed its scheduled Mobile Chest Screening Camp into a Comprehensive Medical Relief Camp for flood victims.



OBJECTIVES



Community Trust and Partnerships

Strengthen community trust and partnerships among healthcare providers.



Psychological Needs

Addressing mental health challenges of affected individuals



Access to Medicines and Diagnostics

Ensuring availability of essential medical resources



Immediate Healthcare Services

Provide immediate healthcare services to flood-affected populations.



منار کمیونٹی ڈویلپمنٹ
(سوات) کیلئے فوری میڈیکل

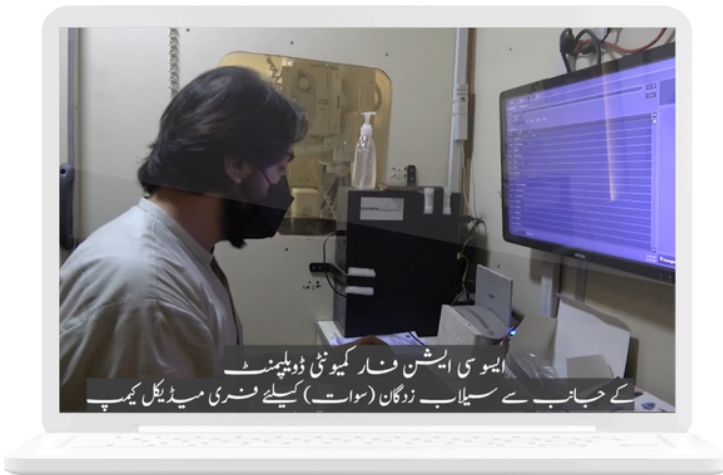
METHODOLOGY

Planning and Coordination

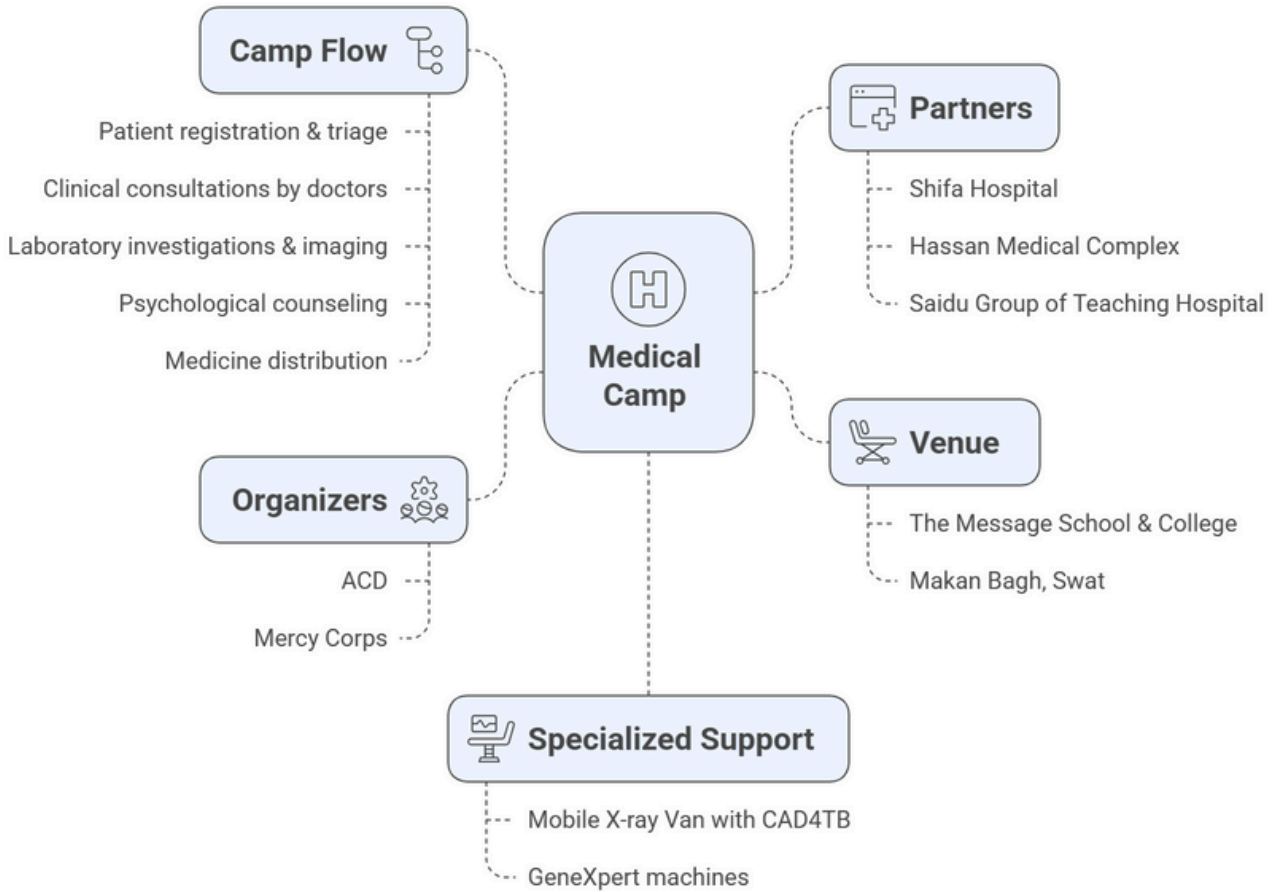
- Conducted joint planning with the District Health Office Swat.
- Partnered with Shifa Hospital, Hassan Medical Complex, and Saidu Group of Teaching Hospital.
- Secured mobile diagnostic vans from Mercy Corps (equipped with Gene Xpert).

Service Delivery Model

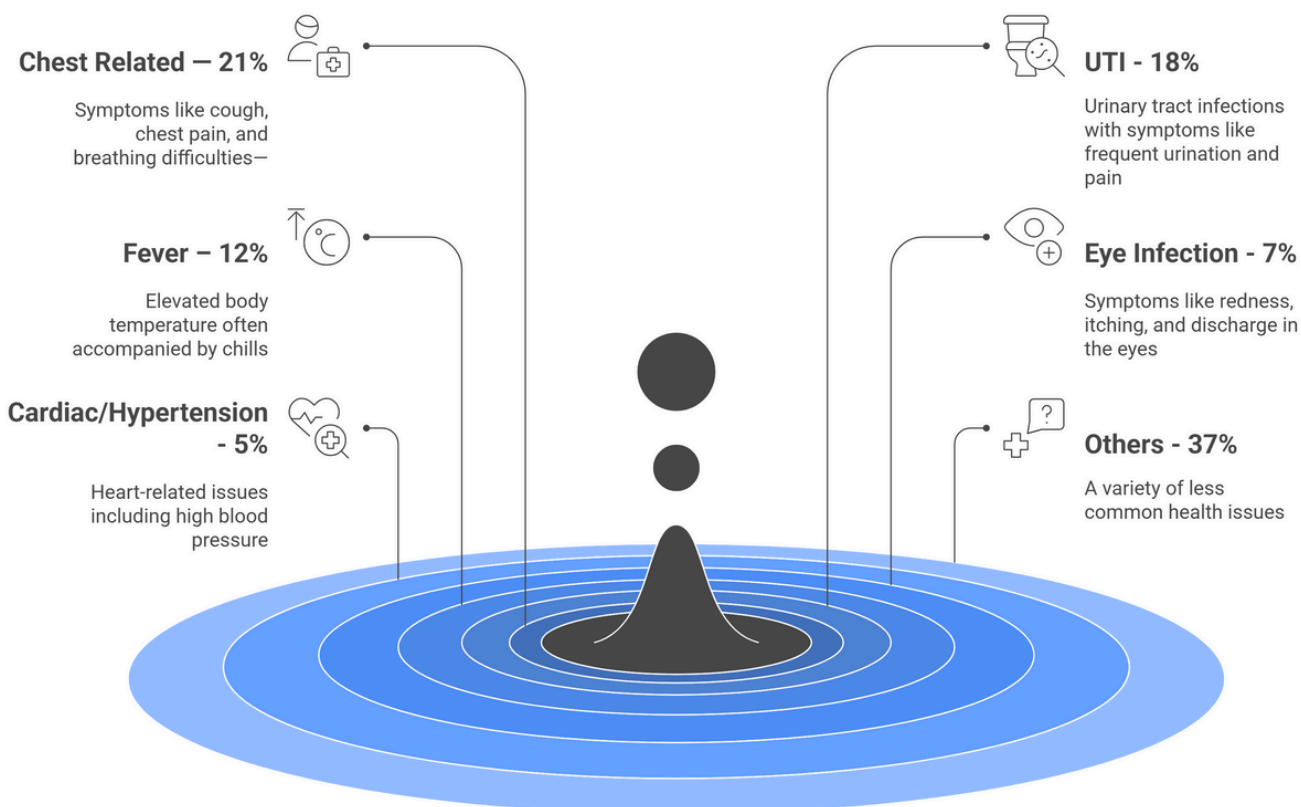
- Registration desk managed patient flow.
- Triage and consultation desks for pediatrics, gynecology, general medicine, and chronic illness.
- Diagnostics section (lab, X-ray, Gene Xpert).
- Pharmacy unit for medicine dispensing.
- Counseling corner for psychosocial support.



CAMP SETUP & OPERATIONS



BENEFICIARIES & STATISTICS







CASE STORIES

TB Diagnosis and Treatment

3 suspects presented with persistent cough and weight loss. On-site diagnostics confirmed Active Tuberculosis. They were immediately enrolled in treatment, reducing the risk of further spread.



CHALLENGES FACED

-  **High patient load** within limited operational hours.
-  **Logistical** challenges in transporting medicines supplies.
-  **High demand for counseling** due to psychological trauma.
-  **Poor road access**, difficulties in mobilization.






KEY OUTCOMES & IMPACT

- ✓ Immediate relief provided to **574 patients**
- ✓ **3 new TB cases diagnosed** and initiated on treatment
- ✓ **7 TB patients continued treatment** without interruption
- ✓ Strengthened collaboration among public, private, and NGO sectors
- ✓ Increased community trust in emergency healthcare interventions

RECOMMENDATIONS & WAY FORWARD

- Continue regular medical and psychological support camps in disaster-affected areas.
 - Strengthen disease surveillance and reporting systems.
 - Ensure sustainable supply of medicines and diagnostics during emergencies.
 - Expand mobile diagnostic services to underserved areas.
 - Advocate for long-term infrastructure development to enhance resilience.
- 



ACKNOWLEDGEMENTS

ACD extends heartfelt gratitude to:

- **Mercy Corps** for financial and technical support.
- **District Health Office Swat** for guidance and coordination.
- **Partner hospitals** (Shifa Hospital, Hassan Medical Complex, Saidu Group of Teaching Hospital) for providing doctors and technical staff.
- **Community volunteers** for patient registration, logistics, and crowd management.

Together, these contributions helped ensure timely, life-saving relief for the most vulnerable communities of Swat.

